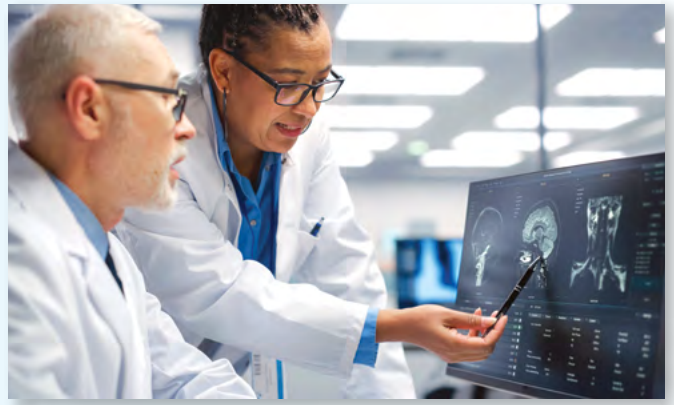


THE POWER OF

Highly Specialized Expertise

OPPORTUNITIES TO INVEST IN **TALENT**

Philanthropy plays a critical role in our ability to recruit and support the world-class physicians, scientific innovators, thought leaders and teams who together comprise City of Hope. Your gift can be an investment in the talented individuals who stand behind City of Hope's transformative discoveries and who deliver leading-edge, deeply compassionate care to so many patients and families.



Faculty and Leadership Support

Administrative Chair | *\$5 million to endow a named administrative chair*

Administrative Chairs represent the highest honor available to senior administrators in academic medicine. Named Administrative Chairs can be established to support senior enterprise leaders, such as the President of City of Hope Orange County, City of Hope's Chief Nursing Officer, or the Director of an Institute or Center. Your gift to establish a named Administrative Chair for one of these key positions will help City of Hope attract and retain industry leaders of exceptional vision, accomplishment and expertise to strengthen our enterprise and advance our mission.

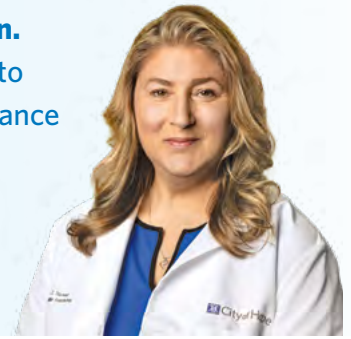
Faculty Chair | *\$3 million to endow a named faculty chair*

Faculty Chairs are reserved for senior scientists and physicians whose extraordinary accomplishments have earned them substantial recognition. Chair holders strengthen the capacity of our clinical and research programs, elevate our national and international profile, and help attract other top faculty to be part of our success. Named Faculty Chairs are often awarded to Department or Division Chairs. Your gift to establish a Faculty Chair will help our System leaders recruit and retain world-class scientists and clinicians who will help transform the standard of care for cancer, diabetes and other serious illnesses.

“Faculty who come to City of Hope know that this is an amazing place for innovation.

Here, faculty have access to an expedited research pathway — including the ability to quickly test and manufacture drugs and biological therapies on-site, and expert guidance on speeding new treatments from labs to patients.”

Debbie C. Thurmond, Ph.D., Director, Arthur Riggs Diabetes & Metabolism Research Institute
Chan Soon-Shiong Shapiro Distinguished Chair in Diabetes



Professorship | *\$1.5 million to endow a named professorship*

Professorships honor and support exceptional members of the faculty who have made major contributions to research, education and/or patient care, and who are continuing to build their careers. A highly valued form of recognition in a competitive marketplace, endowed Professorships help City of Hope attract and retain some of the most sought-after physicians and scientists. Your gift to establish an endowed Professorship will forever link your name with gifted experts and innovators who are passionate about fighting cancer or diabetes.



City of Hope Faculty Recruitment Fund

Gifts at all levels welcome.

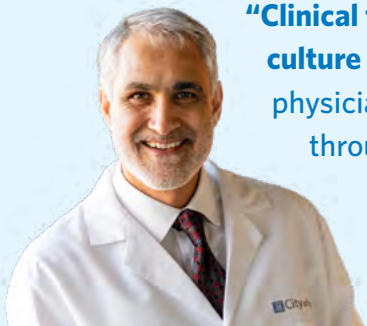
City of Hope is a standout among comprehensive cancer centers and a leader in cancer and diabetes research due to the caliber of our world-class faculty. Gifts to the City of Hope Faculty Recruitment Fund empower System leaders to recruit more outstanding scientists and physicians who share our commitment to compassionate care and pioneering discovery. Your support can help ensure City of Hope is a magnet for renowned clinicians and emerging stars who will provide the highest-quality, most advanced care for patients and families.



Supporting Scientific Innovators

City of Hope Innovator Awards | *Gifts at all levels welcome. Opportunities are available at \$500,000+ to endow a named award.*

City of Hope Innovator Awards enable the Comprehensive Cancer Center Director/Chief Scientific Officer to recognize outstanding early- and mid-career scientists who are taking cancer and diabetes research in exciting new directions. These awards are given to emerging scientific leaders and to some of the brightest young researchers at City of Hope in order to support novel research activities. Your gift to support City of Hope Innovator Awards can help scientists advance forward-looking ideas and position them to develop the proof of concept needed to compete for future funding from external sources.



“Clinical fellows extend City of Hope’s deep expertise in specialized cancer care and our culture of exquisite compassion to patients around the world. Working alongside our skilled physicians, they gain crucial training in innovative therapies and techniques that they will carry throughout their careers. Some fellows even go on to use that training to serve patients at City of Hope, joining the faculty as I did after my own clinical fellowship here.”

Vijay Trisal, M.D., System Chief Clinical Officer; Dr. Norman & Melinda Payson Professor in Medicine

Fellowships and Scholarships

Fellowships | \$750,000 to endow a named clinical, postdoctoral or nursing fellowship

Clinical Fellowships are awarded to talented new physicians who are continuing their training after completing a residency. Clinical fellows come to City of Hope to learn from our expert physicians. Through these new clinicians, we can pass on our knowledge and techniques and, in doing so, help shape the next generation of cancer care providers. Your gift will help City of Hope attract gifted early-career individuals who may go on to become leaders in the field.

Postdoctoral Fellowships are awarded to scientists who have recently completed their Ph.D.s and now bring new ideas and valuable skills to our laboratories. Research faculty across the enterprise rely on postdoctoral fellows to help advance their research and contribute to the development of new treatments, cures and diagnostic techniques. Your gift can honor and support our most talented and productive early-career researchers.

Nursing Fellowships honor some of the extraordinary nurses who deliver superior front-line care to patients and assist with clinical research. These fellowships support advanced training and professional development for both veteran nurses and emerging talent. You can designate your fellowship to support nurses working in a particular specialty area or clinical location, and fellowships can be named to honor the donor, a loved one or a valued caregiver.

Graduate Student Scholarships | Gifts at all levels welcome. Opportunities are available at \$250,000+ to endow a named scholarship.

Graduate students are the innovators of tomorrow. City of Hope’s Irell & Manella Graduate School of Biological Sciences enrolls approximately 85 doctoral students from the U.S. and abroad. During their training, graduate students work alongside our faculty, staff scientists and postdoctoral fellows, advancing critical work across the enterprise while making important research contributions of their own. Your gift to the City of Hope Graduate Student Scholarship Fund or to your own named scholarship will provide support for future scientific leaders and help us draw more exceptional students to our program.

To learn more about opportunities to invest in City of Hope’s highly specialized expertise or other philanthropic priorities, please contact your Office of Philanthropy representative or Katherine Wilkinson in Strategic Initiatives & Campaign Programs at 626-218-9142 or campaigns@coh.org.

